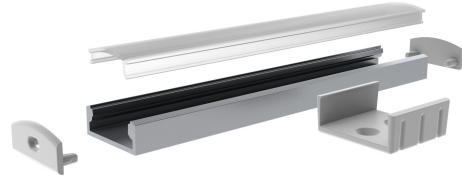




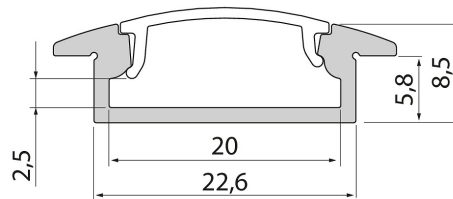
Profile 2m AL PCC 8 Wide

Slimline 8 Wide is a clean-lined, low aluminium profile for LED strips with a maximum width of 20 mm. The wide profile is also compatible with Apus quick connectors. Surface mounting on a ceiling, on a wall, or beneath worktops. A bracket and end pieces with or without wire opening are available as accessories. Slimline 8 Wide R is available for recessed mounting.



Profile 2m AL PCC 8 Wide

PRODUCT CODE	CODE	KG	PRODUCT FAMILY
4222746	L2ALTC	0.4	Slimline 8 Wide



Profile 2m AL PCC 8 Wide
EC002707

Mounting

Structure

Type of accessory/spare part	Profile
Accessory	Yes
Spare part	No

Dimming and control

Photometric data

Lifetime and capacity

Measurements

Electrotechnical data